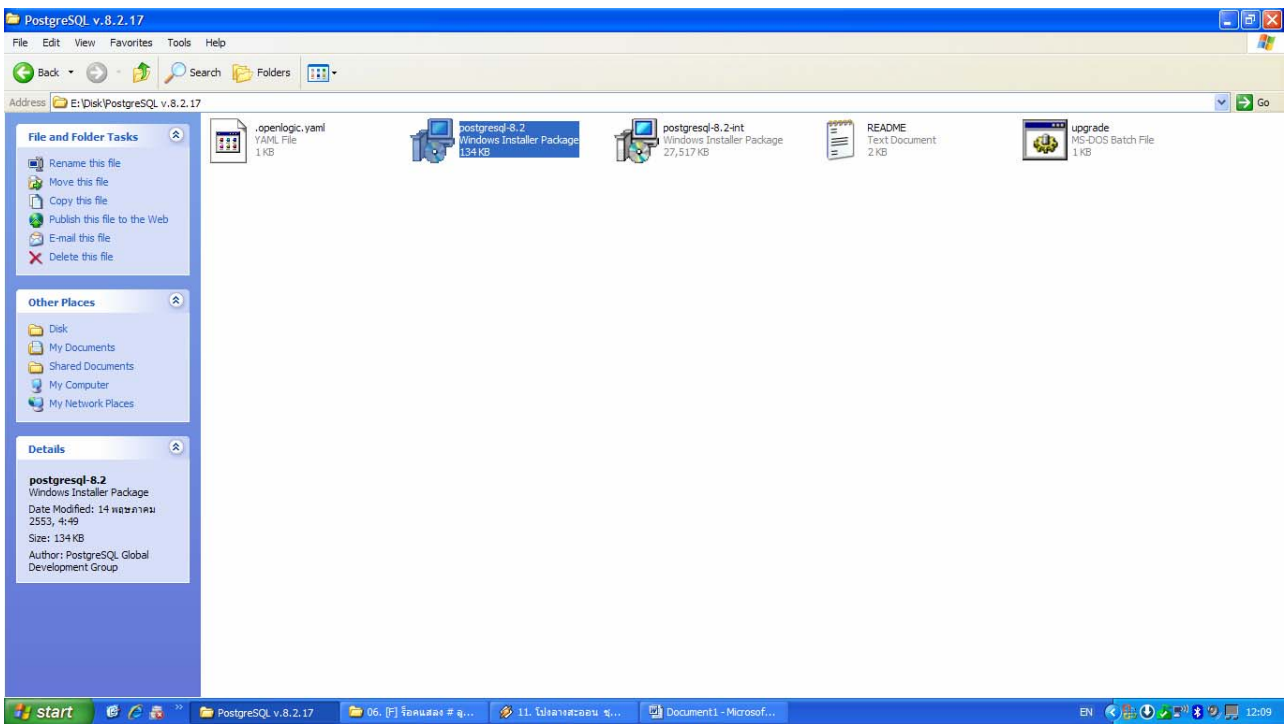
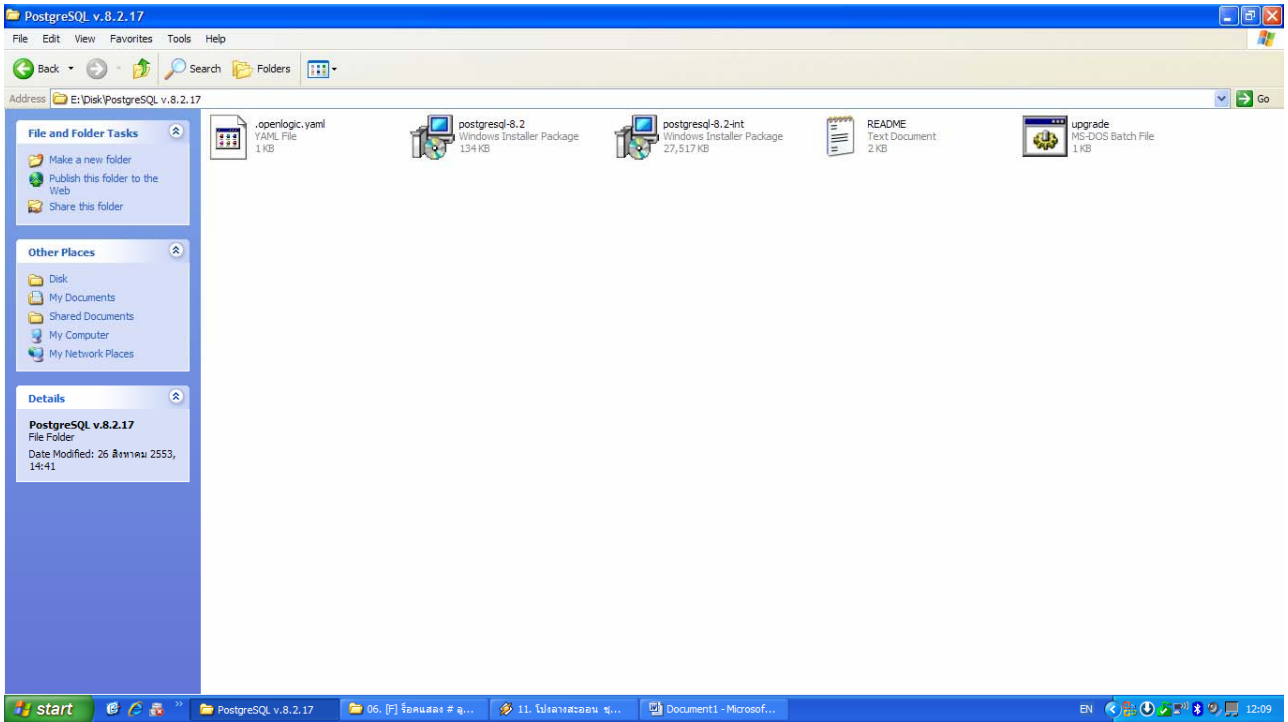
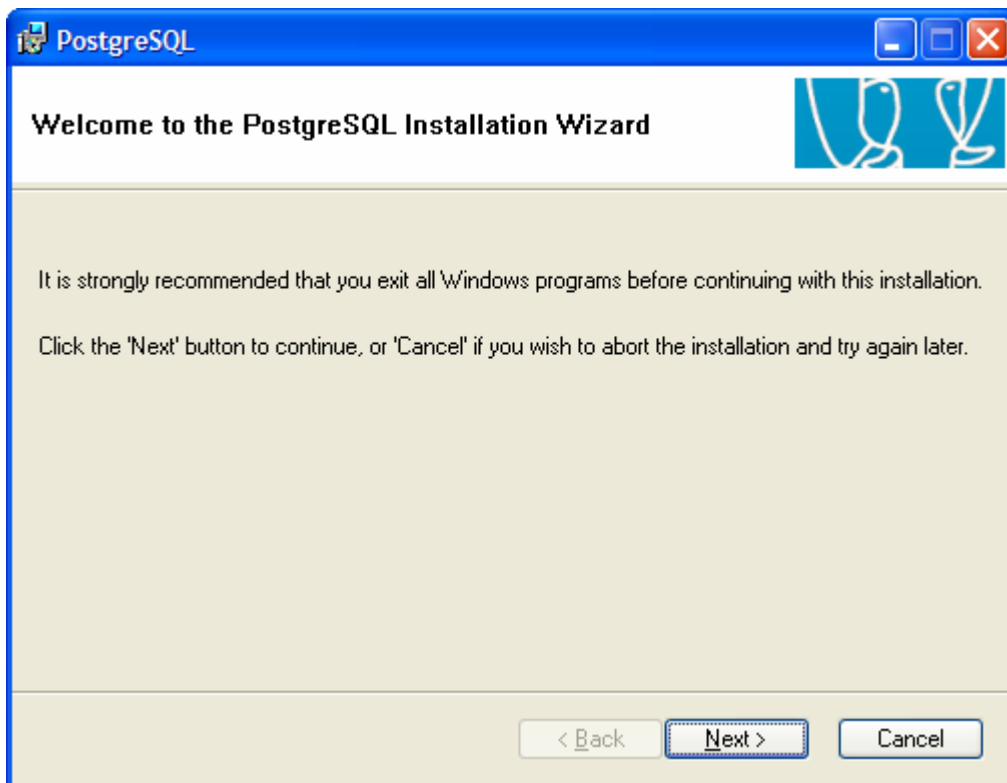
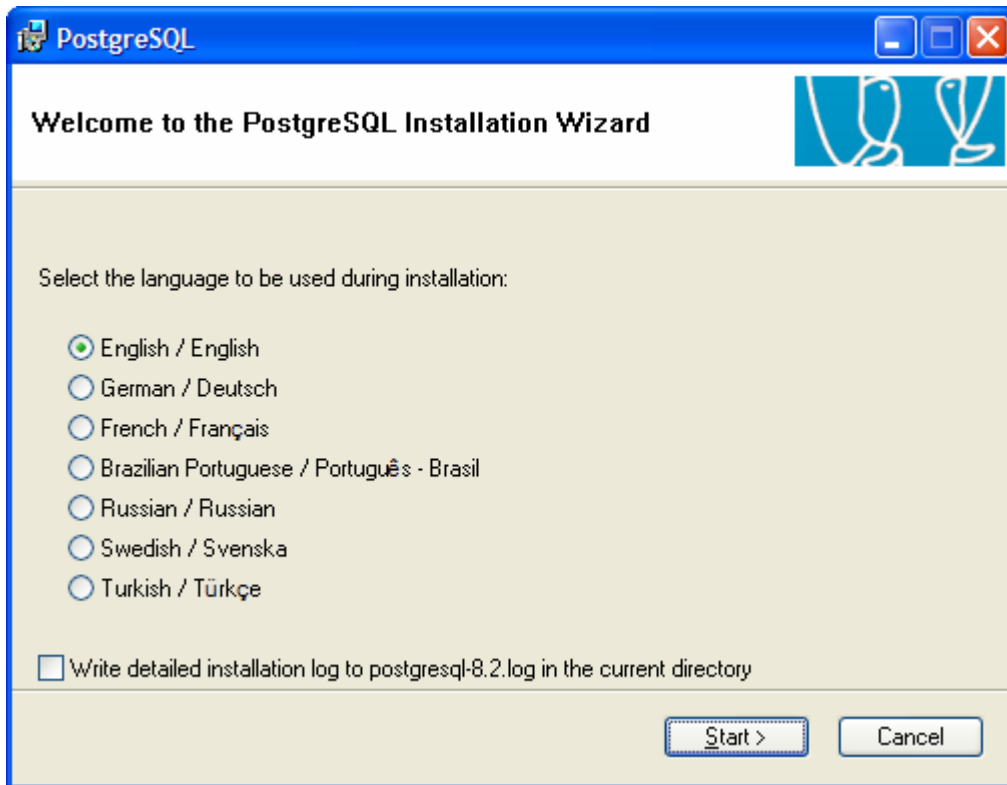
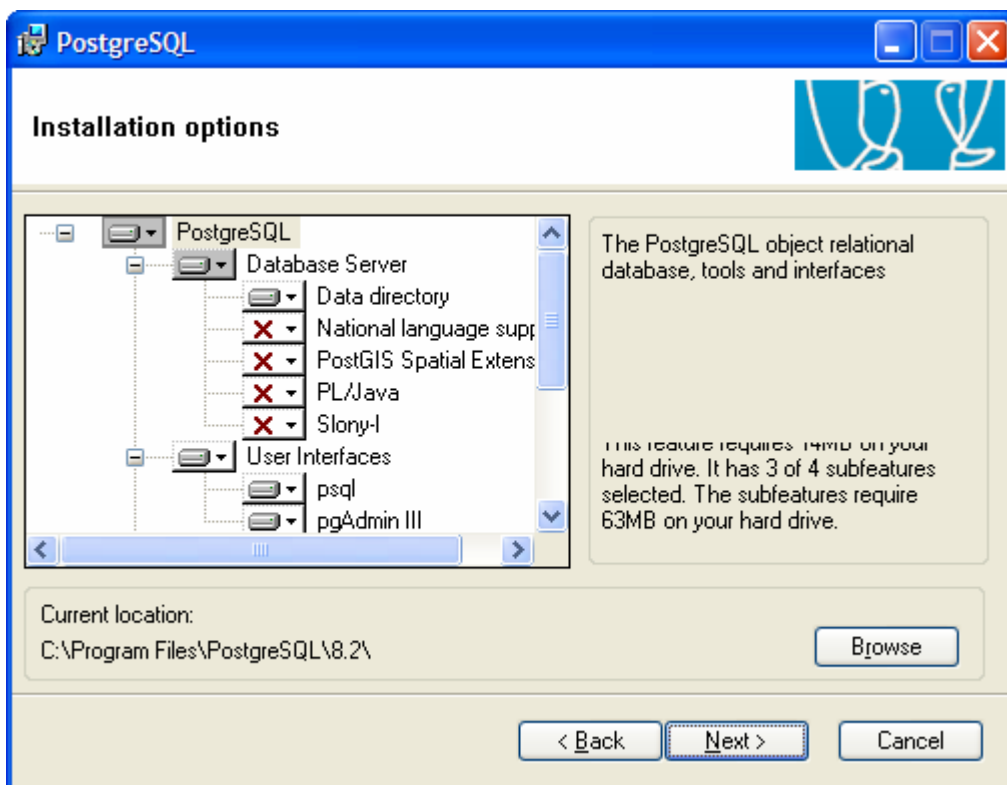
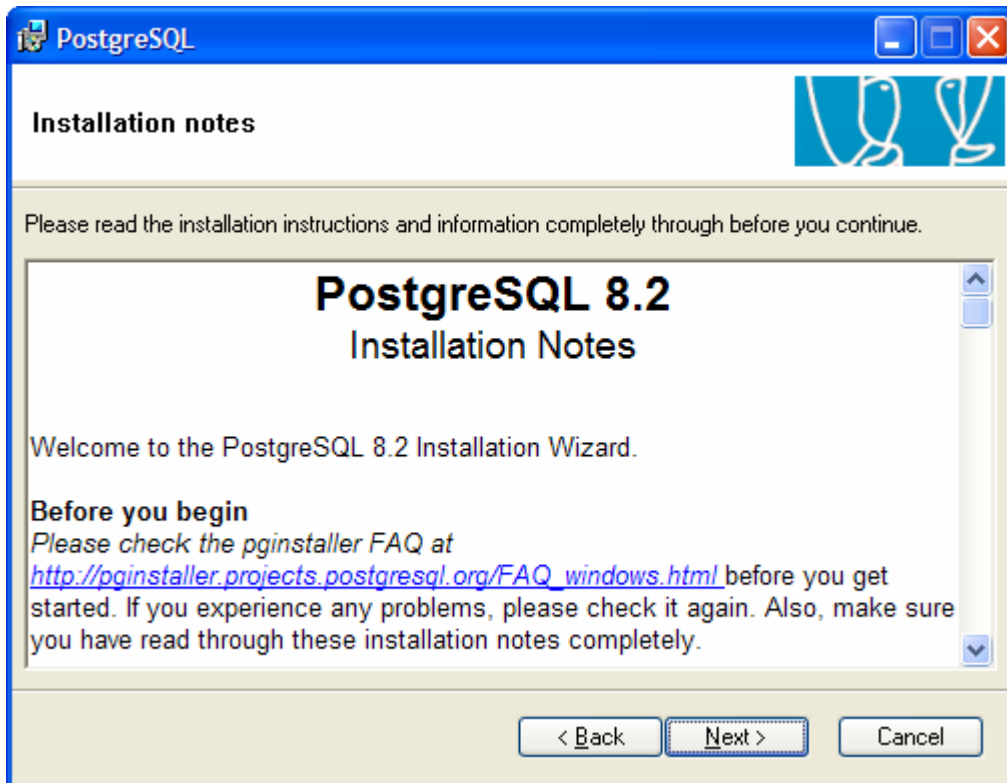
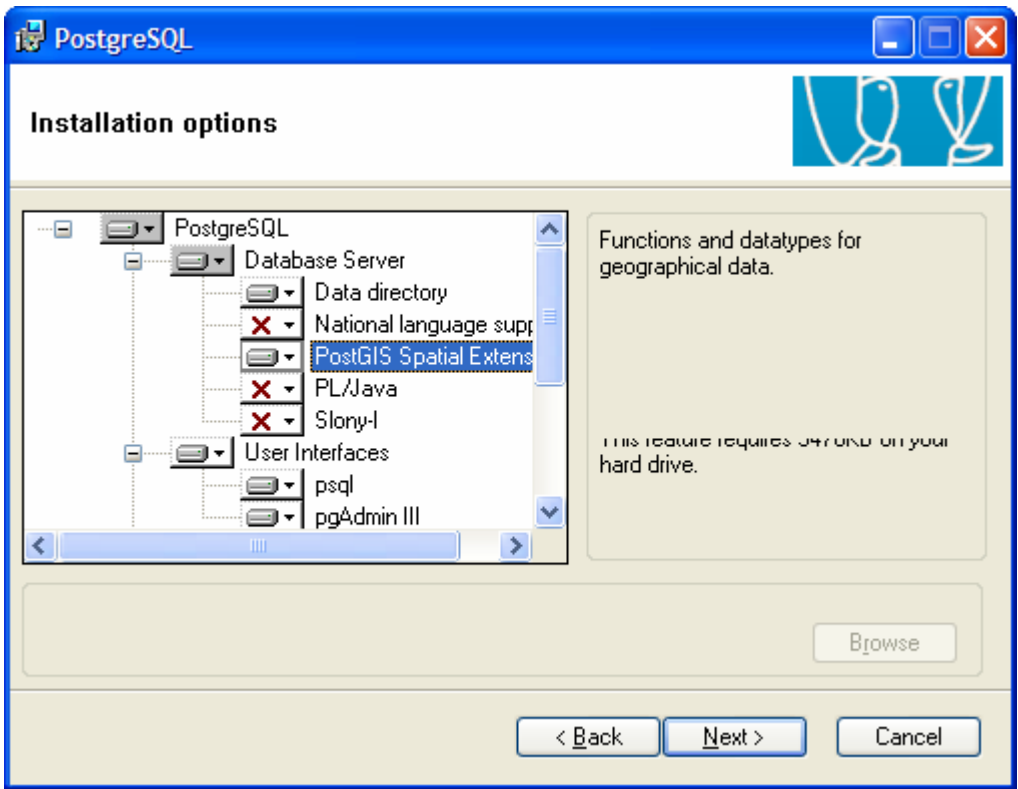
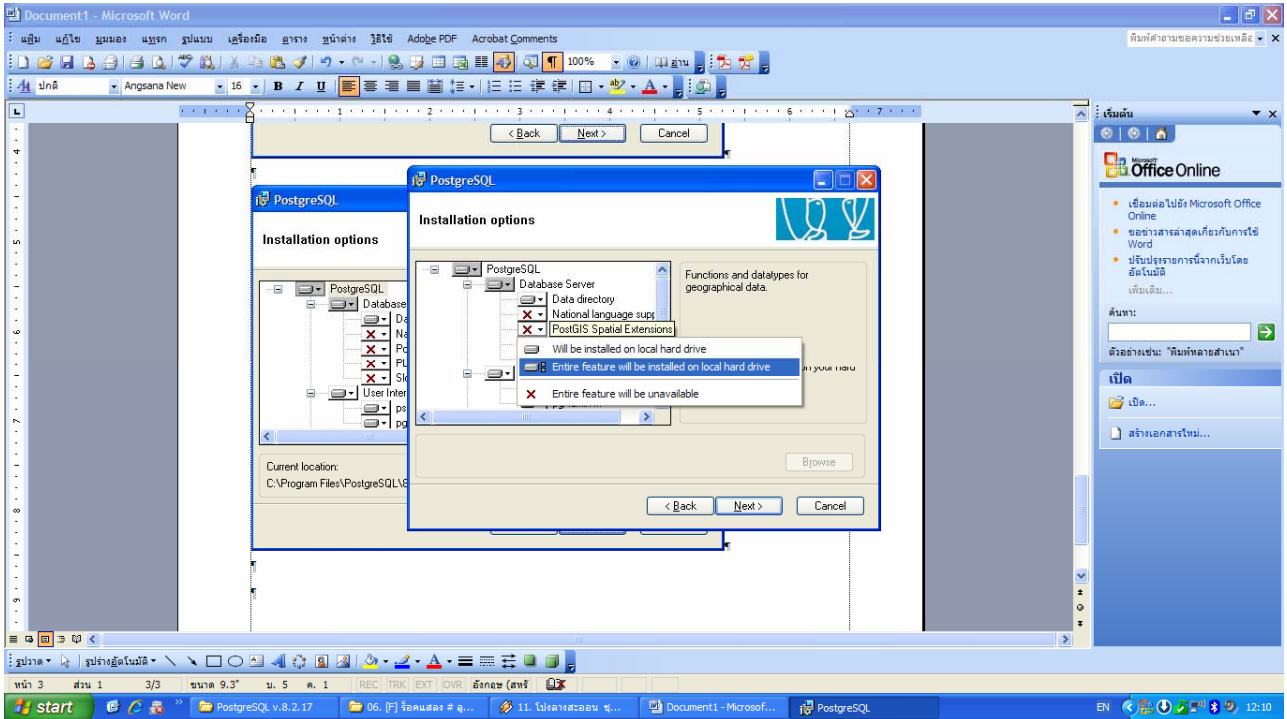


# การติดตั้งโปรแกรม PostgreSQL









PostgreSQL

### Service configuration

Install as a service

Service name: PostgreSQL Database Server 8.2

Account name: postgres

Account domain: NB-PHATSA

Account password:

Verify password:

The service account is the account that runs the PostgreSQL database server. If you have not already created an account, the installer can do so for you. Enter an account name and a password, or leave the password blank to have one auto-generated.

< Back   Next >   Cancel

Account error

? User 'NB-PHATSA\postgres' was not found. Would you like the account to be created for you?

Yes   No

Password

i Generated random password is: 'frIdkqLQg|PXXmP~!zNWN0#auC&JR?Z'

Make sure you write this down because it will be needed for future upgrades.

OK

PostgreSQL

### Initialise database cluster

Initialize database cluster

Port number: 5432

Addresses:  Accept connections on all addresses, not just localhost

Locale: C

Encoding: SQL\_ASCII

Superuser name: postgres

Password:

Password (again):

This is the internal database username, and not the service account. For security reasons, the password should NOT be the same as the service account.

< Back   Next >   Cancel

PostgreSQL

### Initialise database cluster

Initialize database cluster

Port number: 5432

Addresses:  Accept connections on all addresses, not just localhost

Locale: C

Encoding: WIN874

Superuser name: postgres


Password: \*\*\*\*\*

Password (again): \*\*\*\*\*

This is the internal database username, and not the service account. For security reasons, the password should NOT be the same as the service account.

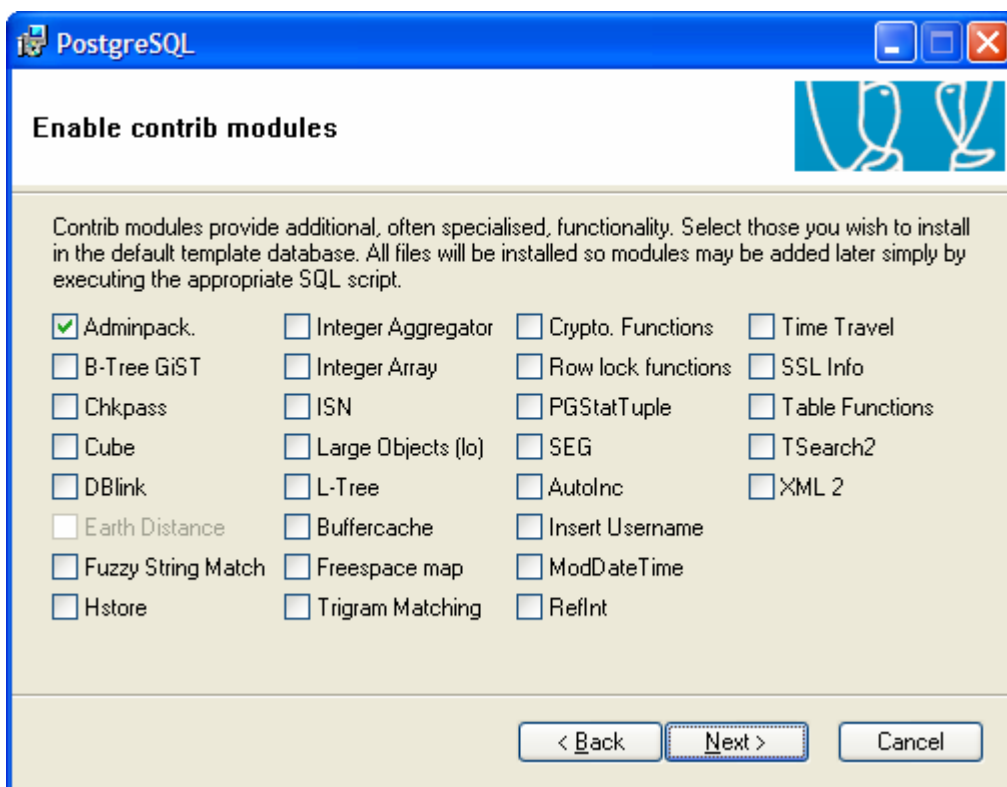
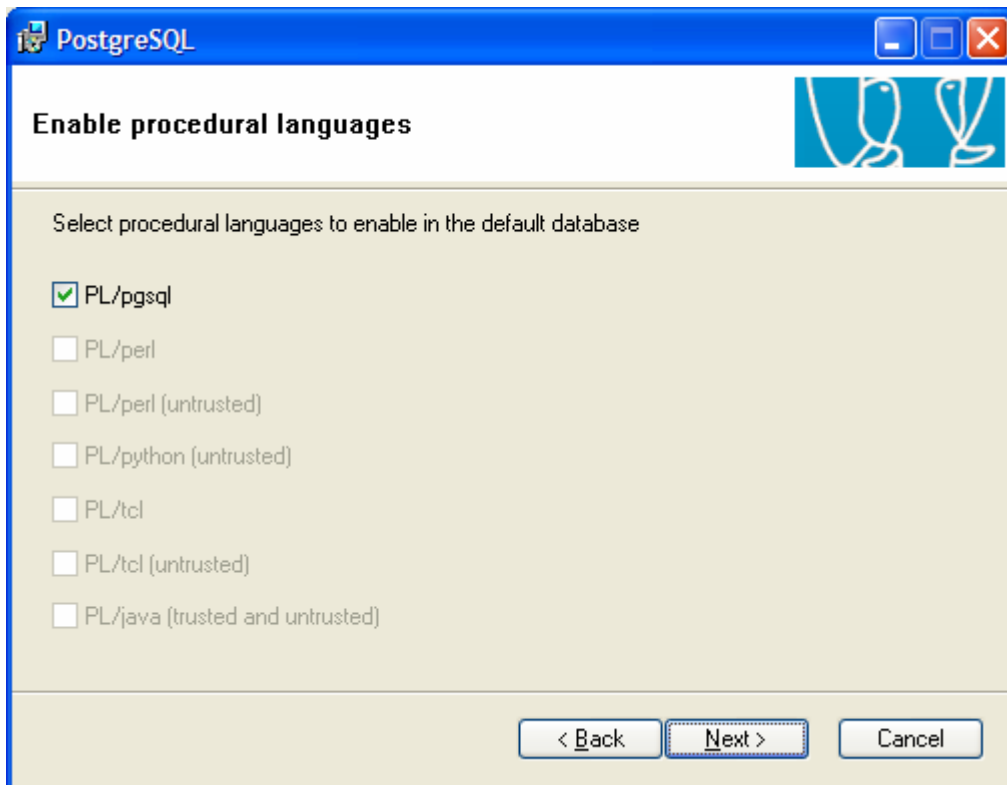
< Back   Next >   Cancel

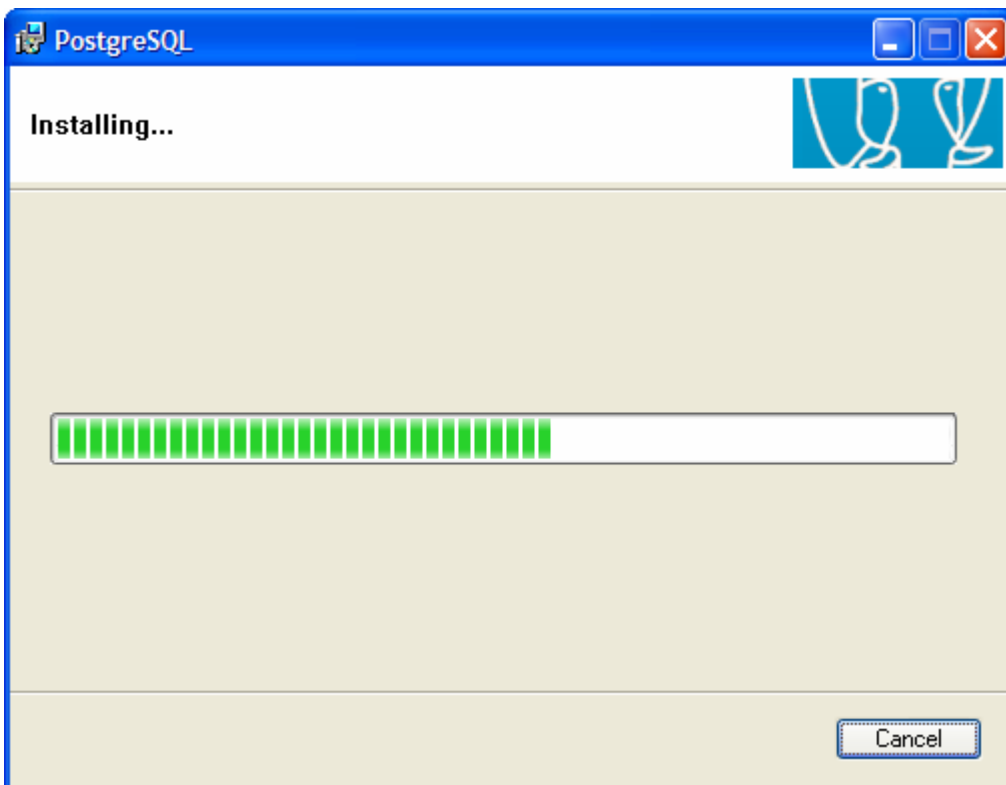
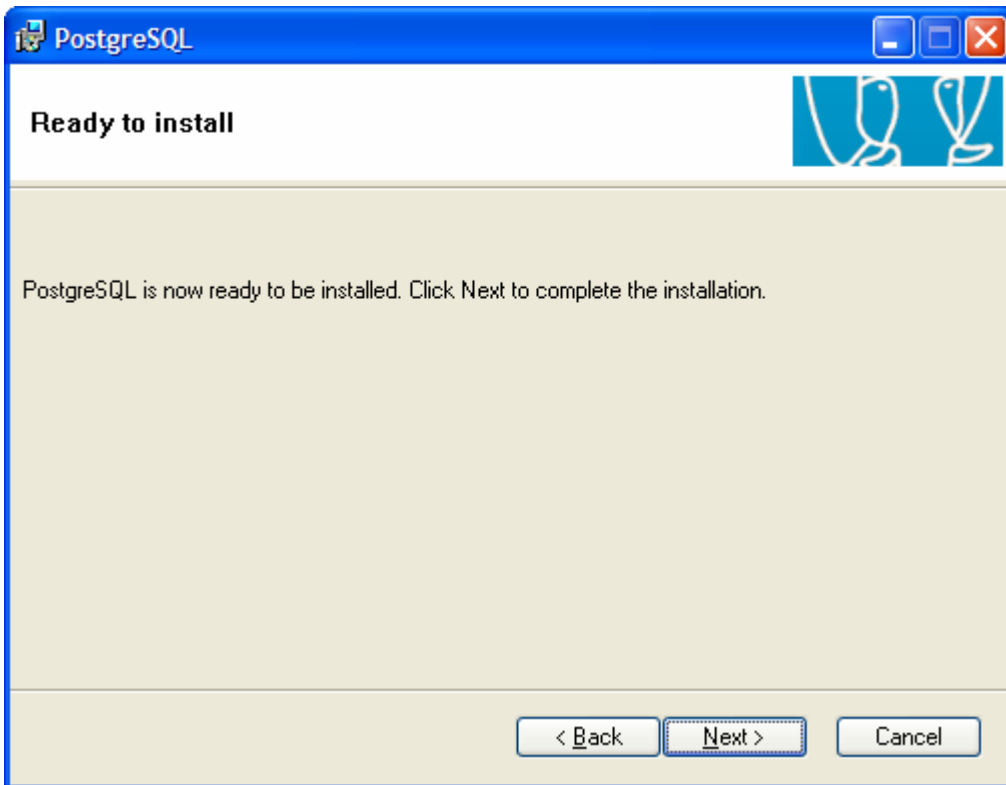
Remote connections

 You have opted for the server to listen for connections on all local addresses, not just 'localhost'.

In order for clients to connect successfully, you must also grant access to specific host addresses or networks by editing the pg\_hba.conf file in the data directory and restarting the PostgreSQL service.

OK





PostgreSQL



## Installation complete!



Congratulations, PostgreSQL has been successfully installed on your system.

We recommend that you subscribe to the `pgsql-announce` mailinglist to receive information about new releases and bugfixes.

[Subscribe to pgsql-announce](#)

Click the finish button to exit from the installer.

< Back

Finish

Cancel